

Vehicle Type: Car  
Vehicle Color: White  
Plate: MS 1234C  
Plate Color: White  
Vehicle Brand: Mercedes-Benz  
Detection Region: 2  
Direction: Approach



MS 1234C



# INTELLIGENT TRAFFIC SERIES

Product Brochure

**Milesight**

# CONTENTS

---



**PAGE**  
**02**

## Introduction

Go Beyond Security, Go for Smarter Traffic

**PAGE**  
**05**

## Milesight PlateXpert Technology

Designed for Milesight Intelligent Traffic Cameras

**PAGE**  
**07**

## TrafficX Series

TrafficX Camera & TrafficX Enforcement Camera



## **PAGE** **Road Traffic Management Series**

**11**

4G Solar-powered ANPR Camera

4G Solar-powered Traffic Sensing Camera

AI Road Traffic Pro Bullet Plus Camera

AI Road Traffic Radar Pro Bullet Plus Camera

AI Road Traffic Supplement Light Pro Bullet Plus Camera

AI Road Traffic Speed Dome Camera

AI Road Traffic PTZ Bullet Camera

AI Road Traffic PTZ Bullet Plus Camera

AI Road Traffic 5G Pro Bullet Plus Camera

## **PAGE** **Parking Management Series**

**19**

Indoor Parking Guidance Camera

Outdoor Parking Management Camera

Entrance & Exit AI LPR Pro Bullet Plus Camera

Entrance & Exit AI LPR Bullet Camera

Entrance & Exit Supplement Light AI LPR Pro Bullet Plus Camera

Entrance & Exit AI LPR Pro Dome Camera





-  AI Powered
-  NDAA Compliant
-  Precise ANPR
-  Integrated 3D Radar
-  Extensive Interoperability





## Go Beyond Security, Go for Smarter Traffic

In the complex landscape of traffic management, reliability and efficiency are non-negotiable. At Milesight, we understand the critical role that intelligent traffic solutions play in ensuring the smooth flow of daily life. That's why we're proud to introduce the Milesight Intelligent Traffic Camera Series - engineered to deliver unparalleled intelligence, efficiency, and reliability.

Drawing on our deep expertise in security surveillance, Milesight brings a refined, purpose-driven approach to modern traffic management. Our commitment to enhancing safety, optimizing traffic flow, and delivering scalable solutions is at the core of every product. Milesight Intelligent Traffic Camera Series is designed to meet the unique and evolving demands of traffic systems, offering advanced capabilities for today's most challenging traffic projects.

Discover how Milesight Intelligent Traffic Camera Series is shaping the future of safer, smarter, and more efficient roads.



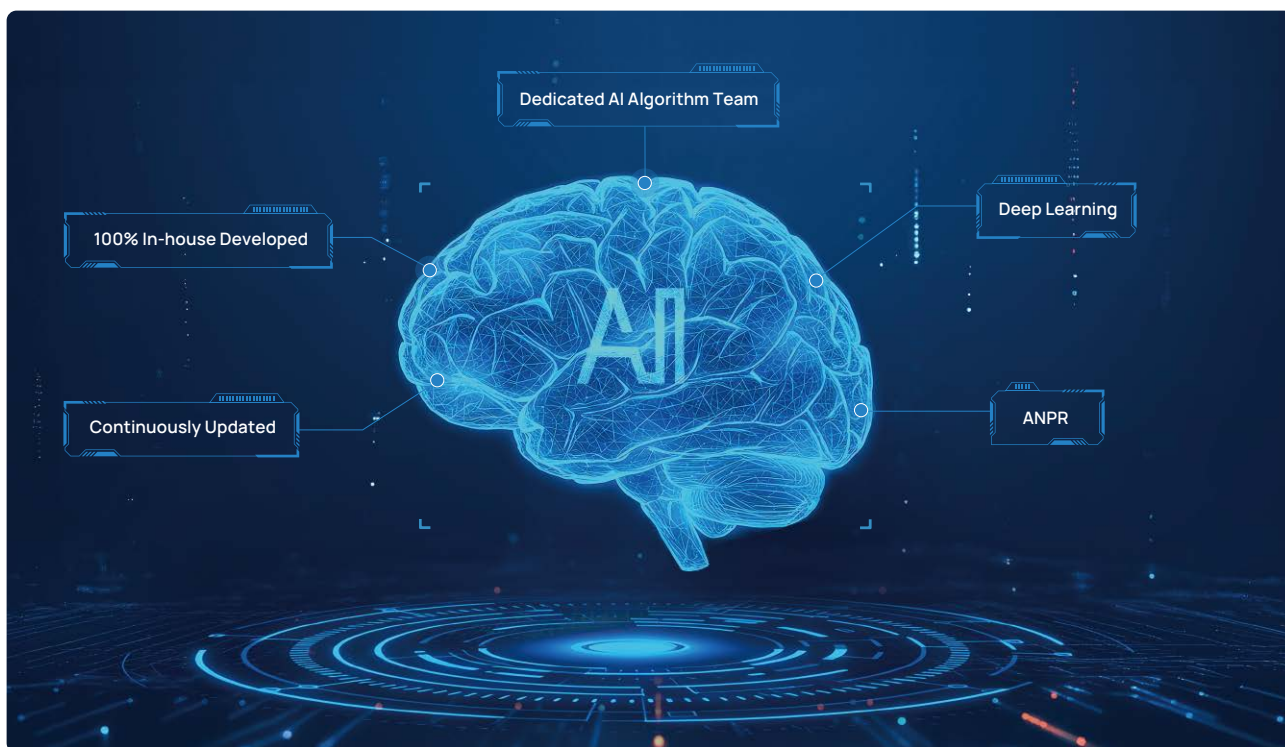


# Milesight PlateXpert Technology

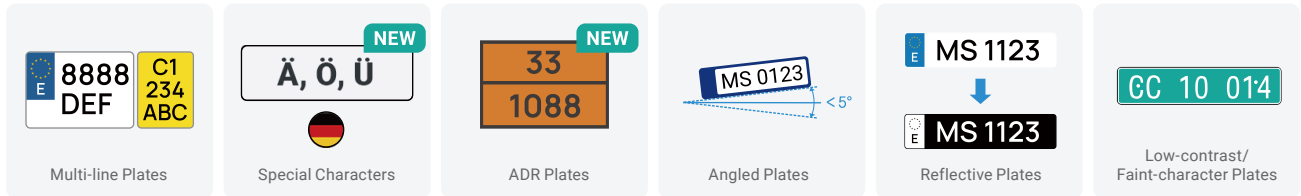
The Real LPR Expert Redefines Precision,  
Designed for Milesight Intelligent Traffic Cameras



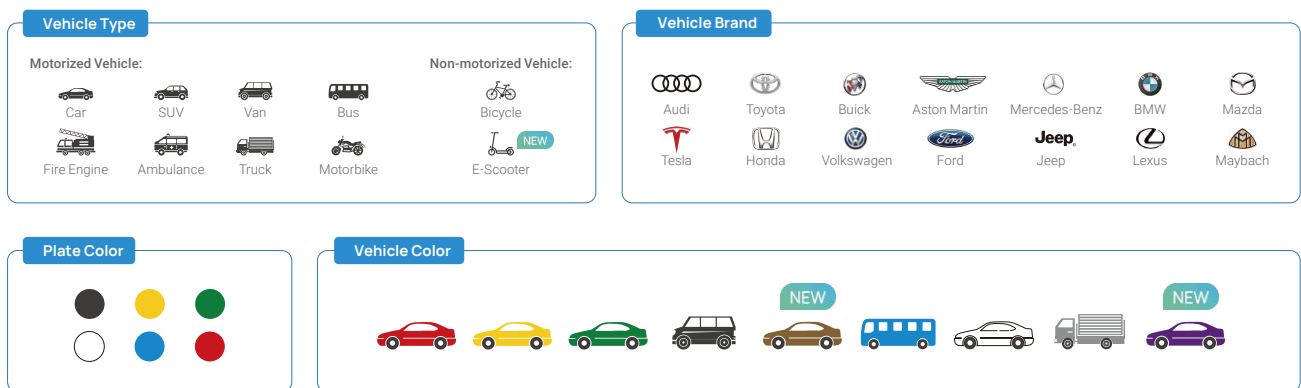
## Advanced & Deep Learning Algorithm Trained for Accuracy



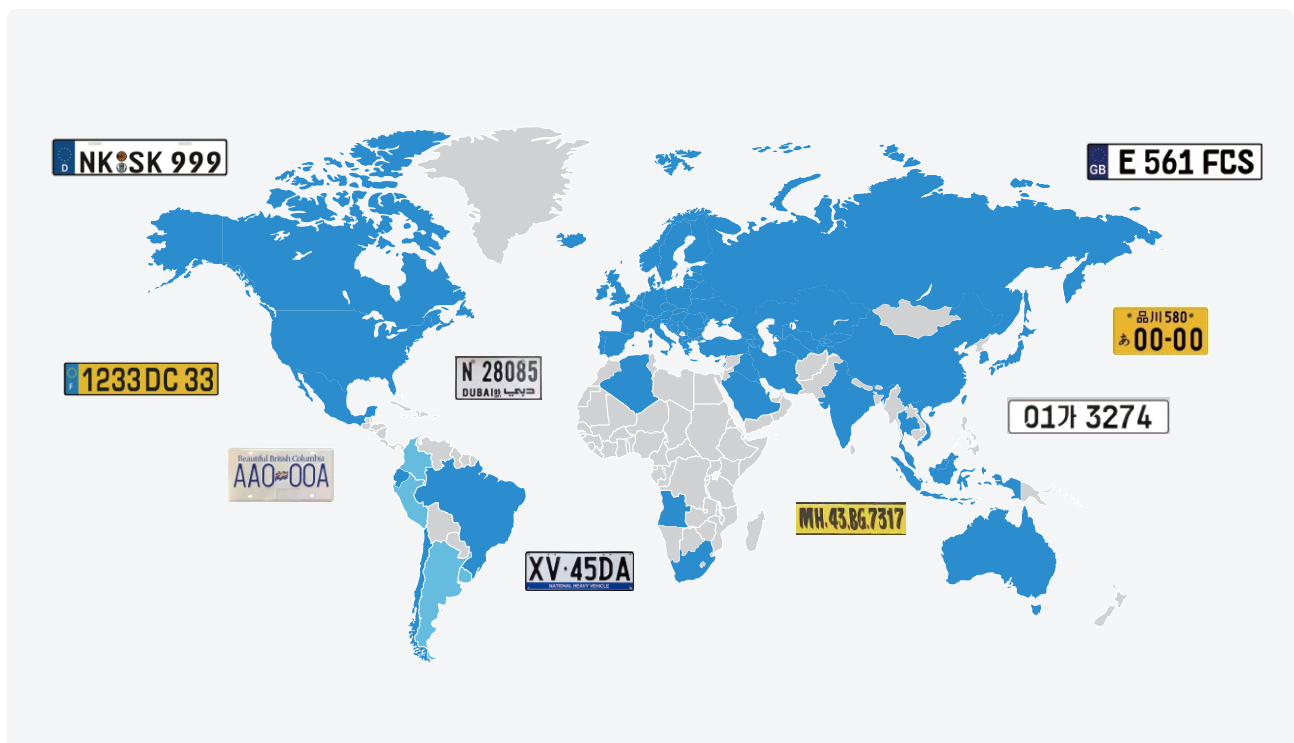
## Effortlessly Recognizing Plates of Every Kind



## Plate Attributes & Vehicle Attributes Recognition



## Over 50+ Countries & Regions Supported





# TrafficX Series

Double Vision, Double Power



TrafficX Camera  
TS5510-GH



Multi-lane Free Flow (MLFF)



## Series Highlights

**99%**

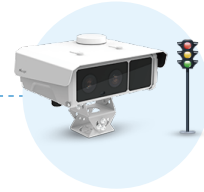
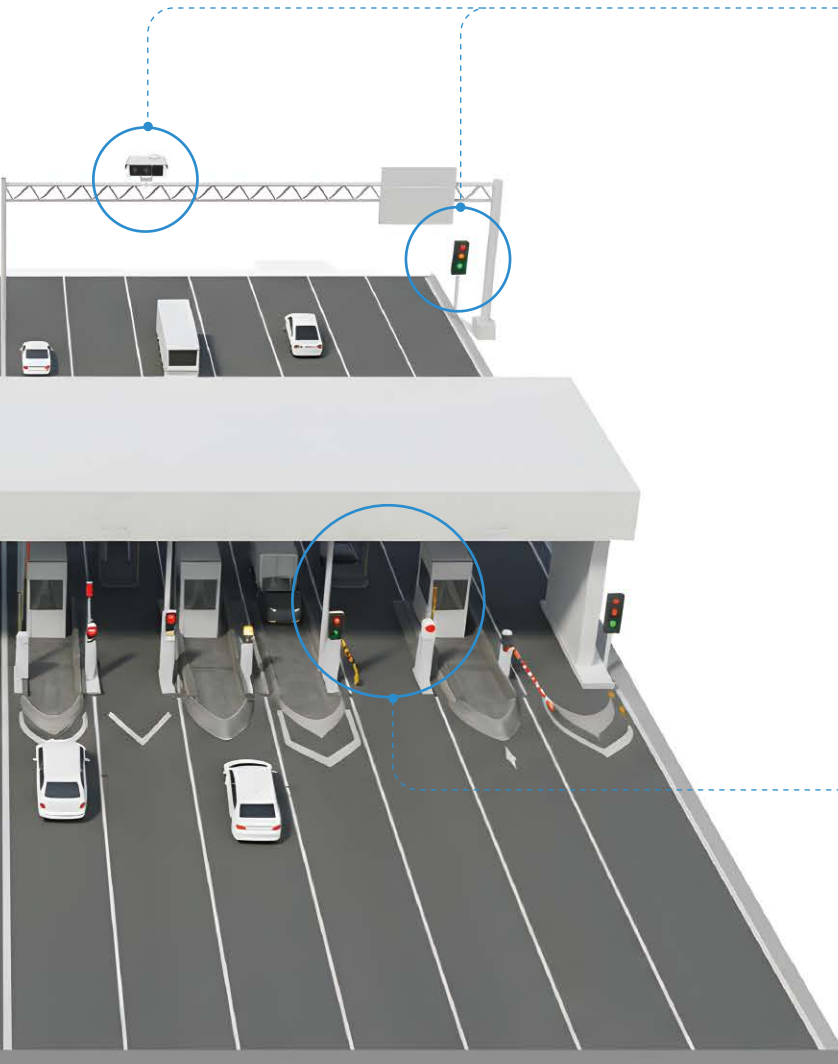
Capture Rate

**98%**

License Plate Recognition Rate

**250km/h**

Recognizable Capture Speed



**TrafficX Enforcement Camera**  
TS5511-GH



Red Light Violation Detection



Toll Gate

**AI**

Powered Onboard ANPR

**50m**

ANPR Distance

**2\*5MP**

Dual Lenses

**2-3**

Lanes Covering

# TrafficX

Double Vision, Double Power



  
Dual-lens

  
AI ISP

  
LPR

  
250km/h

  
IP67

  
GPS

  
4G

  
ONVIF G/S/T

  
1TB Storage

## ★ Highlights



TrafficX Camera

/



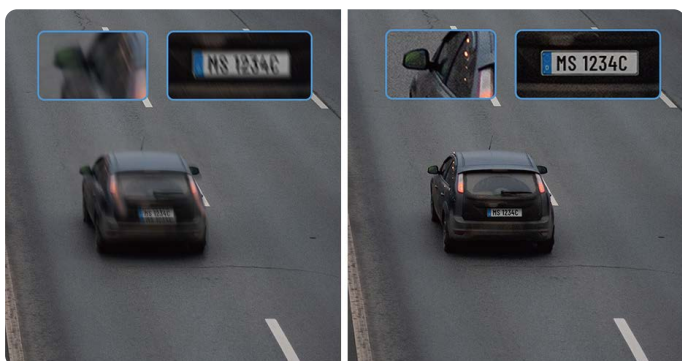
TrafficX Enforcement Camera

Red Light Violation  
Detection

- AI-powered Onboard ANPR
- 2\*5MP Dual Lenses
- 50m ANPR Distance
- 2-3 Lanes Covering
- 1TB SD Card Storage
- Support GPS/4G Module
- TCP/HTTP/MQTT & CGI/API



## Sharp Capture



- Global Shutter for Fast-moving Capture



- AI ISP for Superior Image

## Precise ANPR



- Frame Parity Flashing for Precise ANPR



- 740nm/850nm IR Wavelength

## Maximized Installation Flexibility



Pedestal Mount



Pedestal Pole Mount



Wall Mount



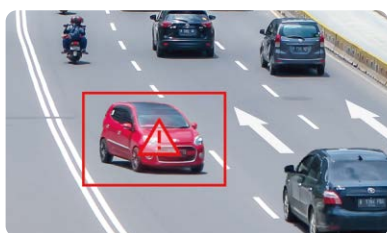
Wall Pole Mount

# Road Traffic Management Series

## Intelligent Cameras for Road Traffic Monitoring



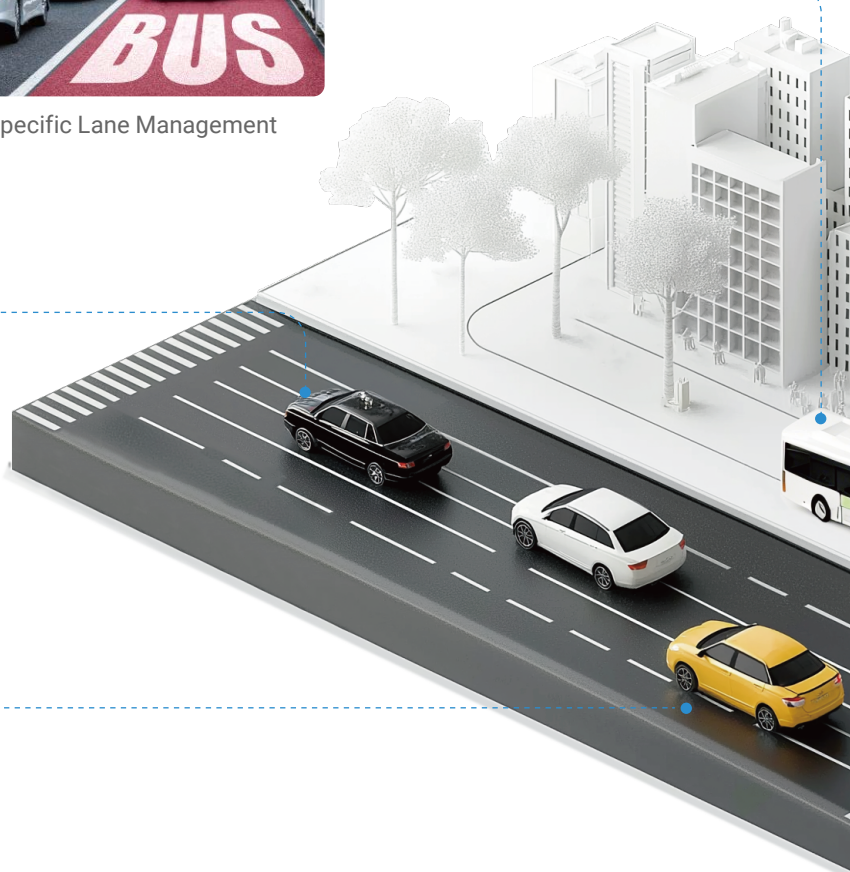
Specific Lane Management



Reverse Driving Detection



Red Light Violation Detection



## Products



4G Solar-powered  
ANPR Camera



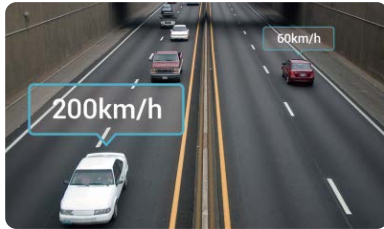
4G Solar-powered  
Traffic Sensing Camera



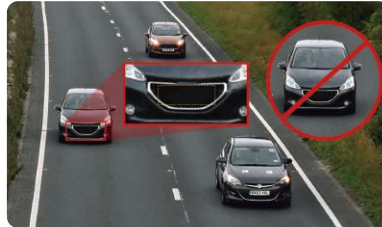
AI Road Traffic Supplement  
Light Pro Bullet Plus Camera



AI Road Traffic PTZ  
Bullet Plus Camera



Speeding Detection



No-Plate Detection



Traffic Flow Management



On-street Parking Violation Detection



AI Road Traffic  
PTZ Bullet Camera



AI Road Traffic Pro  
Bullet Plus Camera



AI Road Traffic Radar  
Pro Bullet Plus Camera



AI Road Traffic  
Speed Dome Camera



AI Road Traffic 5G Pro  
Bullet Plus Camera





## 4G Solar-powered ANPR Camera

### 4G + Solar-powered for Efficient Remote Security



9-Day Battery Life with Continuous Recording



Go Green with Ultra-low Power Consumption

Working Mode	Recording	LPR Detection	Data Transmission
Performance	Continuous	On (Full Frame Rate)	On/Off
Sleep	Scheduled Image Capture	Off	Off

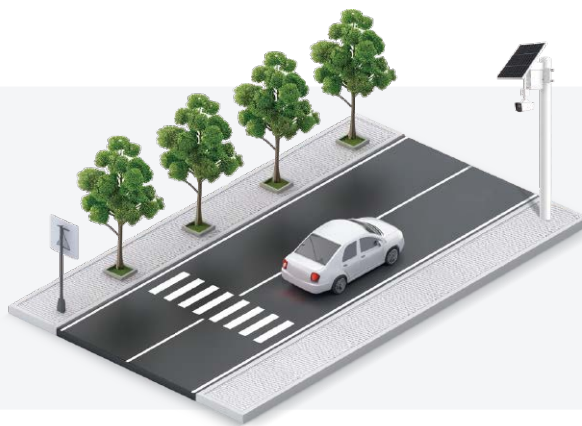
Flexible Working Mode for Enhanced Efficiency



Up to 6\*90Wh Battery & 2\*90W Solar Panel

### Sharp Image for Precise ANPR

- 4MP High-Quality Images
- Specialized 6mm/16mm Lens
- 850nm/740nm IR Wave Length
- Identification for Vehicle Type: Bicycle/Car/Motorcycle/Bus/Truck
- License Plate Recognition
- List Management/List Event
- No-plate Event



### Uncompromising Quality, Unmatched Reliability



Built-in High-Accuracy  
GPS Module



VERIZON and AT&T  
Certificated



IP67 & Category 12  
Typhoon Guaranteed

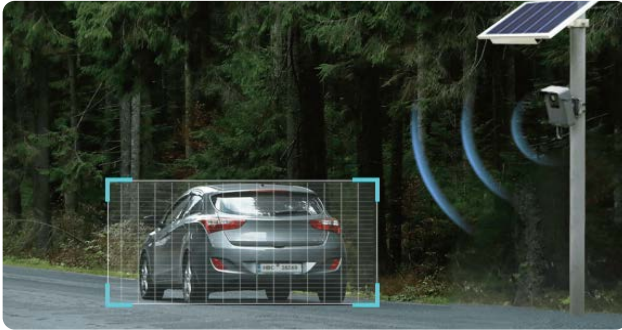


Battery Protection  
in -20°C to +60°C



## 4G Solar-powered Traffic Sensing Camera

### Precise Real-time Capture with Radar & AI



Low-power Mode Ensures Low Consumption & High Efficiency



Solar-powered for Sustainable Use

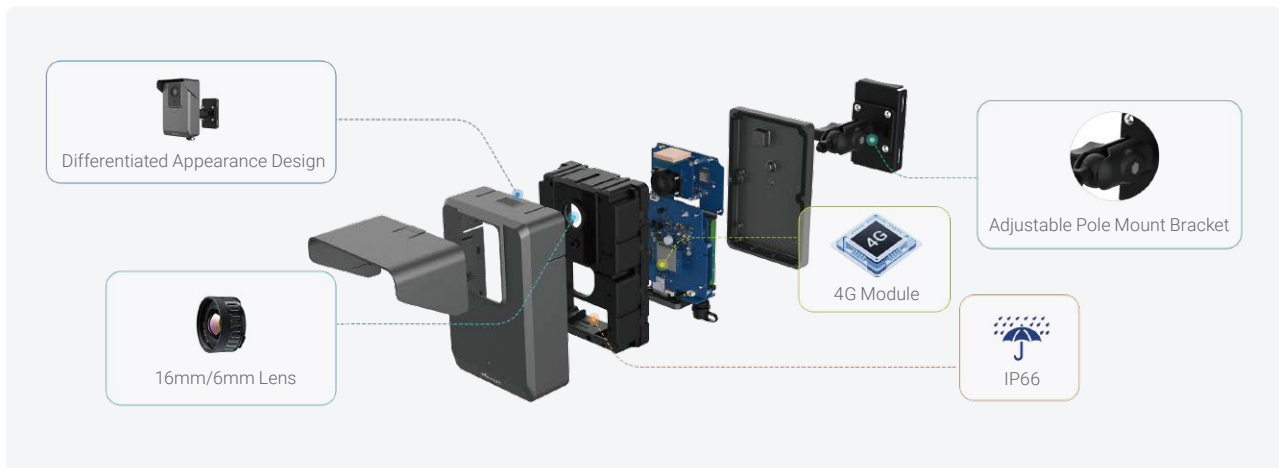


4G LTE Wireless & Effortless Data Transmission

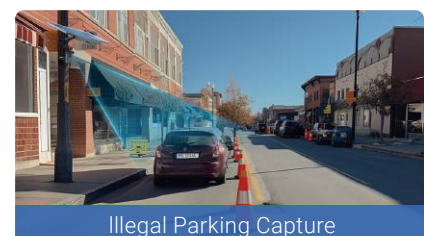


MQTT & HTTP Protocol for Seamless Integration

### Unique Structure Design for Flexible Deployment

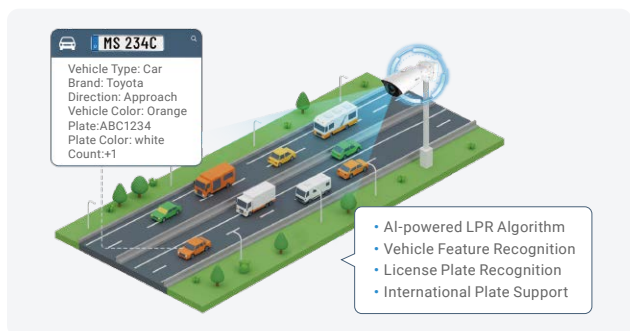


### Various Applications

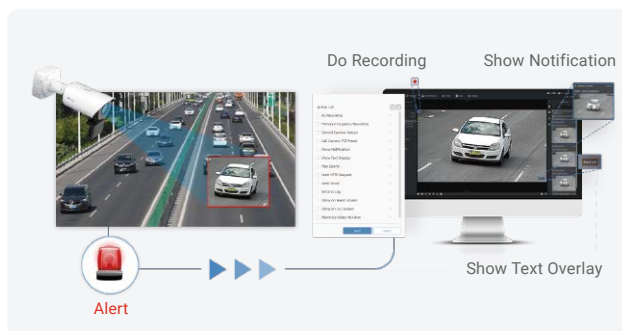




## AI Road Traffic Pro Bullet Plus Camera



Professional AI-powered LPR Camera with Sharp Image



Traffic Violation Detection



### Superior Image Quality

- 4X/12X AF Lens
- Up to 4K Ultra High Definition
- 1/1.8" Sensor & 0.002Lux Starlight
- 90fps High Frame Rate
- 120dB Super WDR



### Traffic Management

- AI-powered LPR
- Traffic Flow Statistics
- Evidence Camera Linkage
- LPR Smart Search
- Plate Data Management



### More Highlights

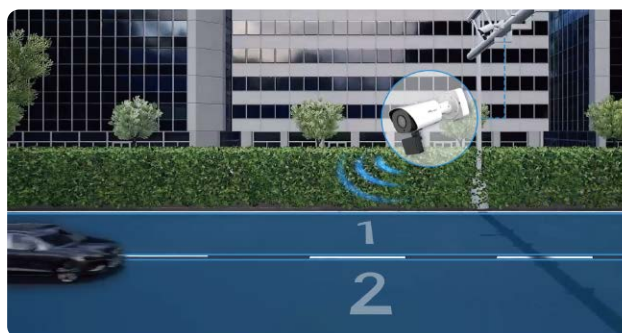
- NDAA
- IP67 & IK10
- Audio I/O, Alarm I/O, DC 12V, RS485, Ethernet Port
- SIP/VoIP Supported



## AI Road Traffic Radar Pro Bullet Plus Camera



Integrated 3D Radar



2 Lanes Monitoring at Once



### Superior Image Quality

- 4X/12X AF Lens
- Smart IR II Technology
- Up to 4K Ultra High Definition
- 1/2" Sensor & 0.002Lux Starlight
- 90fps High Frame Rate
- 120dB Super WDR



### Traffic Management

- AI-powered LPR
- Traffic Violation Detection
- Traffic Flow Statistics
- Evidence Camera Linkage
- LPR Smart Search
- Plate Data Management



### More Highlights

- NDAA
- IP67
- SIP/VoIP Supported

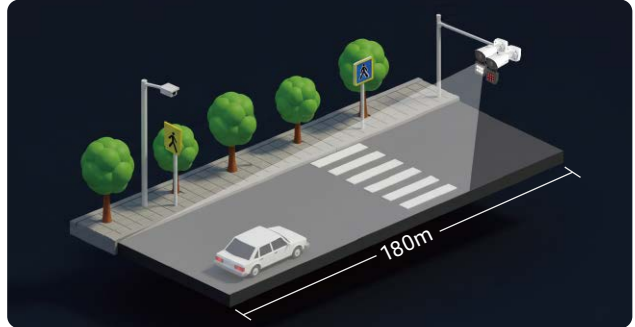




## AI Road Traffic Supplement Light Pro Bullet Plus Camera



Integrated IR LED Light or White LED Light



Illumination Distance Up to 180m

### Superior Image Quality

- 4X(8~32mm) AF Lens
- 140dB Super WDR
- 1/2" Sensor & 0.002Lux Starlight
- 90fps High Frame Rate

### Traffic Management

- AI-powered LPR
- Traffic Violation Detection
- Traffic Flow Statistics
- Evidence Camera Linkage
- LPR Smart Search
- Plate Data Management

### More Highlights

- NDAA
- IP67 & IK10
- Audio I/O, Alarm I/O, DC 12V, RS485, Ethernet Port
- SIP/VoIP Supported
- Integrated Junction Box (Optional)



## AI Road Traffic Speed Dome Camera



Flexible Pan, Tilt and Zoom Tasks



3D Positioning

### Superior Image Quality

- 36X(5.7~205.2mm) AF Lens
- 140dB Super WDR
- 100fps High Frame Rate
- 1/2" Sensor & 0.002Lux Starlight

### Traffic Management

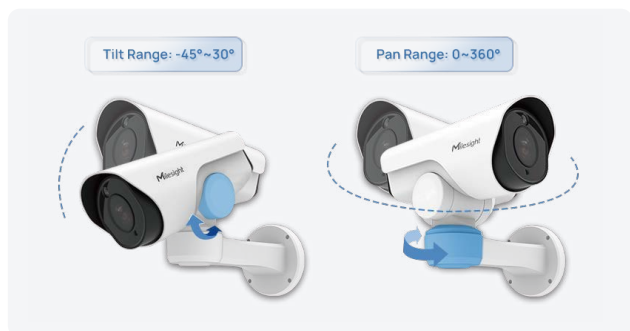
- AI-powered LPR
- Traffic Violation Detection
- Traffic Flow Statistics
- Evidence Camera Linkage
- LPR Smart Search
- Plate Data Management

### More Highlights

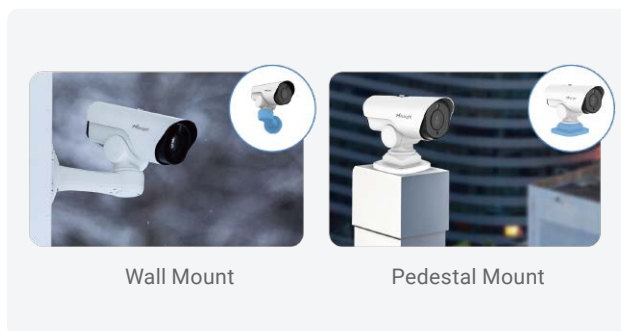
- NDAA
- IP66 & IK10
- Smart Rain-Sensing Wiper (Optional)
- Various Accessories Optional
- SIP/VoIP Supported



## AI Road Traffic PTZ Bullet Camera



360° Endless Pan & 75° Tilt



Wall Mount

Pedestal Mount

Various Installation Modes



### Superior Image Quality

- 12X(5.6~64mm) AF Lens
- 140dB Super WDR
- 90fps High Frame Rate



### Traffic Management

- AI-powered LPR
- Traffic Violation Detection
- Traffic Flow Statistics
- Evidence Camera Linkage
- LPR Smart Search
- Plate Data Management



### More Highlights

- NDAA
- 3D Positioning
- IP66
- SIP/VoIP Supported



## AI Road Traffic PTZ Bullet Plus Camera



360° Endless Pan & 75° Tilt



3D Positioning



### Superior Image Quality

- 5X/12X/20X/23X AF Lens
- 1/1.8" Sensor & 0.002Lux Starlight
- 140dB Super WDR
- 90fps High Frame Rate



### Traffic Management

- AI-powered LPR
- Traffic Violation Detection
- Traffic Flow Statistics
- Evidence Camera Linkage
- LPR Smart Search
- Plate Data Management



### More Highlights

- NDAA
- IP66
- SIP/VoIP Supported



## AI Road Traffic 5G Pro Bullet Plus Camera



Built-in 5G Module for Wireless Streaming



Broad Extensibility



Low Latency & High Bandwidth



Efficient Data Transmission with High Resolution

### Superior Image Quality

- 4X Optical Zoom
- Up to 4K Ultra High Definition
- 140dB Super WDR
- 100fps High Frame Rate
- 1/2" Sensor & 0.002Lux Starlight

### Traffic Management

- AI-powered LPR
- Traffic Violation Detection
- Traffic Flow Statistics
- Evidence Camera Linkage
- LPR Smart Search
- Plate Data Management

### More Highlights

- IP67 & IK10
- SIP/VoIP Supported
- Integrated Junction Box



# Parking Management Series

## Driving Safety and Efficiency in Parking Management



### Indoor Parking Guidance

- Dual Lens for 6 Spaces
- Customizable Multi-color Indicator
- AI LPR & Vehicle Attributes Recognition



### Outdoor Parking Management

- Occupation Detection (Up to 100 Space)
- LPR Parking Detection (4 Space & License Plate Recognition)



## Series Highlights



Indoor Parking  
Guidance Camera



Outdoor Parking  
Management Camera



Entrance & Exit AI LPR  
Pro Bullet Plus Camera



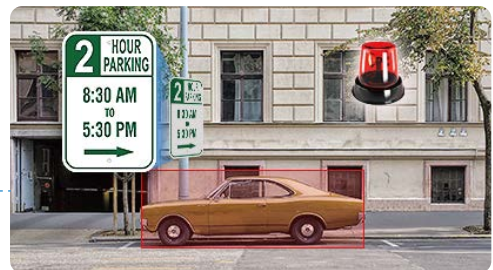
### Entrance & Exit Management

- AI-powered LPR Algorithm
- Black/White List
- No-plate Vehicle Detection
- Wiegand Interface for Access Control
- Integrated Supplement Light



### Video Surveillance

- Image Capturing and Video Recording for Vehicle Security Incidents



### On-street Parking Management

- Parking Occupancy Detection & Residence Time
- Parking Violation Detection



Entrance & Exit AI LPR Bullet Camera



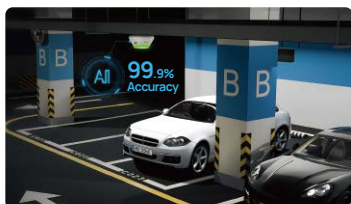
Entrance & Exit Supplement Light AI LPR Pro Bullet Plus Camera



Entrance & Exit AI LPR Pro Dome Camera



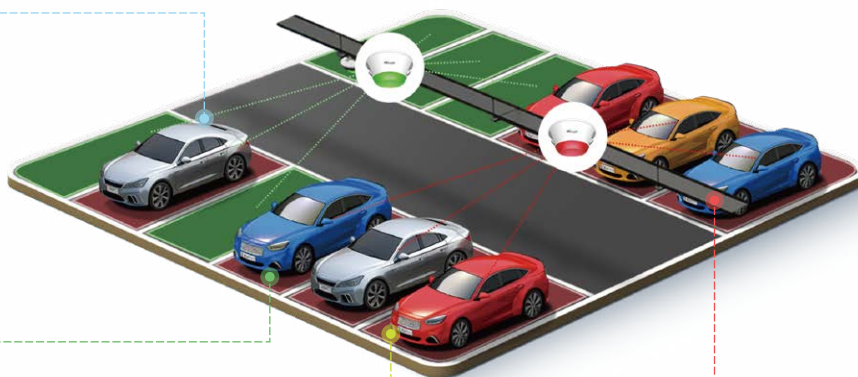
## Indoor Parking Guidance Camera



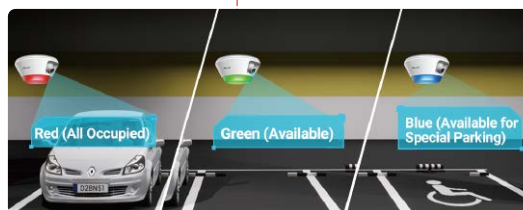
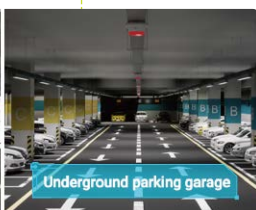
AI Parking Space Occupancy Detection with 99.9% Accuracy



AI LPR & Vehicle Feature Recognition

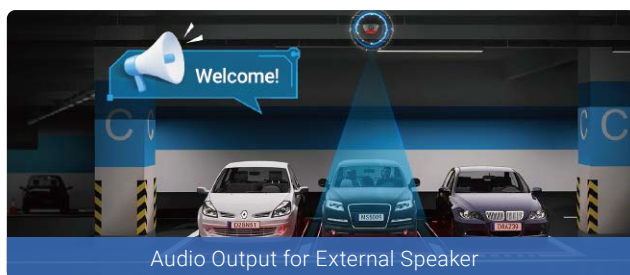


Perfect for Indoor & Semi-open Parking Lots



Multi-color Customizable Indicator

## More Highlights



Audio Output for External Speaker



Flexible Integration with CGI/APIs



Daisy-chain for Easy Installation



IP65 Rated Robust Performance





## Outdoor Parking Management Camera



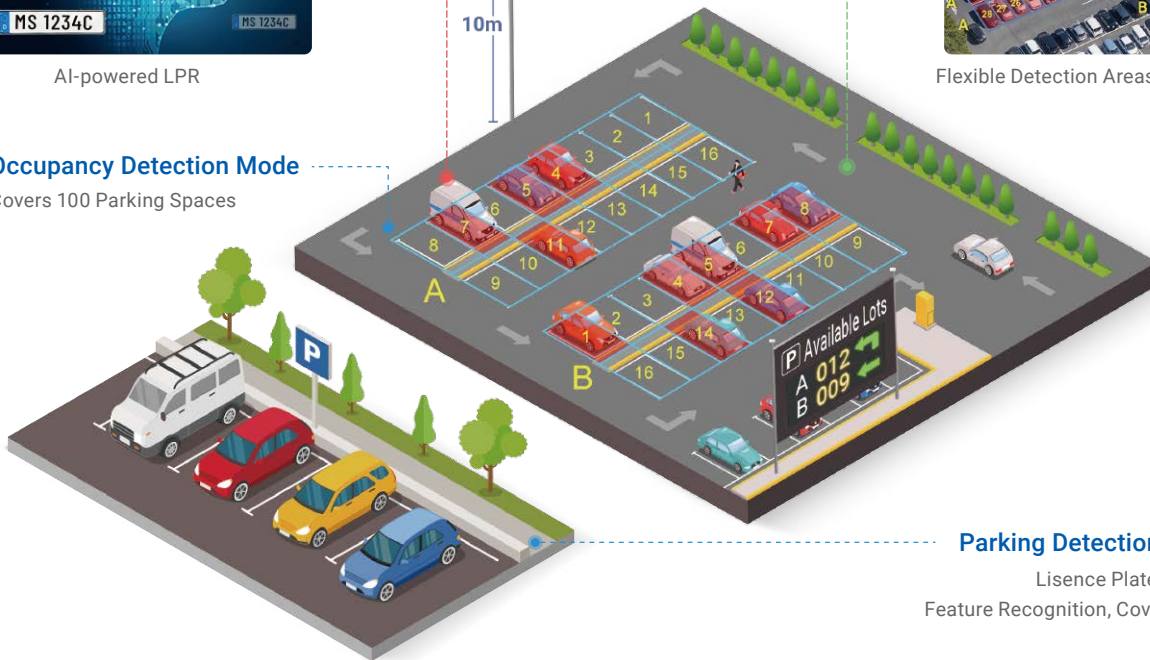
AI-powered LPR

### Occupancy Detection Mode

Covers 100 Parking Spaces



Flexible Detection Areas Configuration



### Parking Detection with LPR

Lisence Plate and Vehicle Feature Recognition, Covers 4 Spaces

## Superior Image Quality

- 4K Ultra High Definition
- 1/1.8" Progressive Scan CMOS
- 120dB Super WDR
- Smart IR II Technology
- 65m IR Distance



## More Highlights



IP67 & IK10



CGI/APIs  
Supported



SIP/VoIP  
Supported



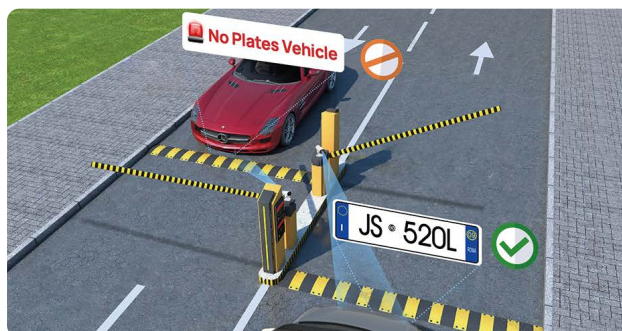
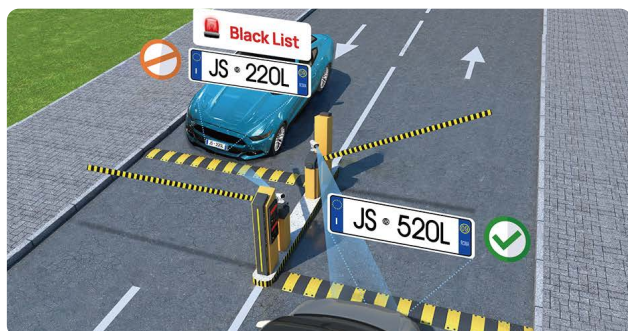
Integrated  
Junction Box



Integrated Cable  
Management Bracket



## Entrance & Exit AI LPR Pro Bullet Plus Camera



Black/White List and No-plate Vehicle Detection

### Entrance & Exit Management

- AI-powered LPR
- Black & White List
- No-plate Vehicle Detection
- Wiegand Protocol Supported for Access Control
- Evidence Camera Linkage
- LPR Smart Search

### Superior Image Quality

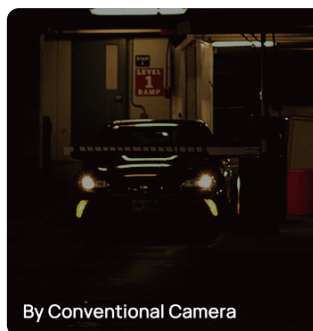
- 4K Ultra High Definition
- 140dB Super WDR
- 0.005Lux Ultra Low-light
- 60fps High Frame Rate
- Smart IR II Technology

### More Highlights

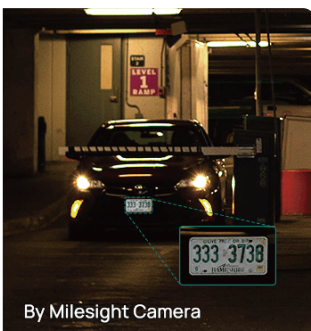
- IP67 & IK10
- CGI/APIs Supported
- SIP/VoIP Supported
- Integrated Junction Box (Optional)



## Entrance & Exit AI LPR Bullet Camera



By Conventional Camera



By Milesight Camera

0.005Lux Ultra Low-light



Intelligent AI-powered LPR Algorithm

### Entrance & Exit Management

- AI-powered LPR
- Black & White List
- No-plate Vehicle Detection
- Evidence Camera Linkage
- LPR Smart Search

### Superior Image Quality

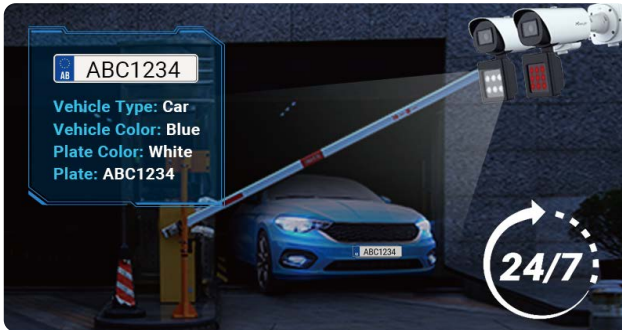
- 140dB Super WDR
- 0.005Lux Ultra Low-light
- 60fps High Frame Rate
- Smart IR II Technology

### More Highlights

- IP67 & IK10
- CGI/APIs Supported
- SIP/VoIP Supported
- Integrated Junction Box (Optional)



## Entrance & Exit Supplement Light AI LPR Pro Bullet Plus Camera



Integrated IR LED Light or White LED Light



Wiegand Protocol Supported for Access Control

### Entrance & Exit Management

- AI-powered LPR
- Black & White List
- No-plate Vehicle Detection
- Wiegand Protocol Supported for Access Control
- Evidence Camera Linkage
- LPR Smart Search

### Superior Image Quality

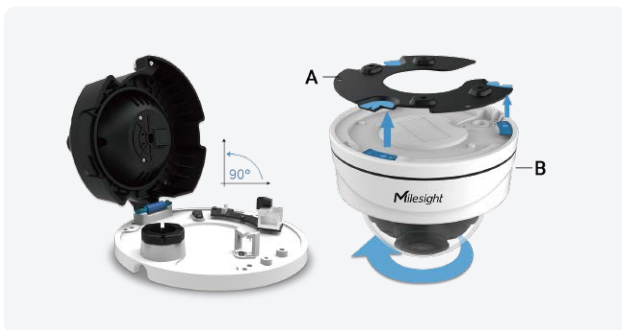
- 140dB Super WDR
- 0.005Lux Ultra Low-light
- 60fps High Frame Rate

### More Highlights

- IP67 & IK10
- SIP/VoIP Supported



## Entrance & Exit AI LPR Pro Dome Camera



Efficient & Simple Installation



Easy and Flexible Deployment

### Entrance & Exit Management

- AI-powered LPR
- Black & White List
- No-plate Vehicle Detection
- Evidence Camera Linkage
- LPR Smart Search

### Superior Image Quality

- 140dB Super WDR
- 0.005Lux Ultra Low-light
- 60fps High Frame Rate
- Smart IR II Technology

### More Highlights

- Efficient & Simple Installation
- IP67 & IK10
- SIP/VoIP Supported



■ Make Sensing Matter ■

V4.3



**Milesight** | [www.milesight.com](http://www.milesight.com)

Tel: +86-592-5922772(8801) - Sales +86-592-5922772(8701) - Support

Mail: [sales@milesight.com](mailto:sales@milesight.com) [support@milesight.com](mailto:support@milesight.com)

Address: Building C09, Software Park Phase III, Xiamen 361024, Fujian, China



[www.milesight.com](http://www.milesight.com)